



# CARE & MAINTENANCE INSTRUCTIONS

## GENERAL CLEANING INSTRUCTIONS:

- For normal everyday cleaning, the manufacturer recommends mild soap and water with a soft washcloth.
- Always rinse thoroughly after cleaning.
- Ensure proper ventilation to prevent buildup of mildew at corners, crevices, seams and silicone.
- Squeegee shower doors after each use for optimal appearance.

## RECOMMENDED CLEANERS:

- ✓ Formula 409
- ✓ Vinegar & water may also be used to soften mineral deposits
- ✓ Use 1/2 cup Clorox Bleach per gallon of water as a disinfectant
- ✓ Microban 24 Hour
- ✓ Wet & Forget Shower
- ✓ Invisible Shield (for glass shower doors)

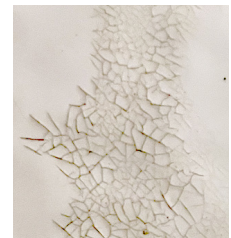


## DO NOT USE:

- |  |                              |   |
|--|------------------------------|---|
| ✗ Original Clean Shower                    | ✗ Lysol Disinfectant Cleaner | ✗ Aerosol Cleaners<br>(Including foam cleaners) |
| ✗ Clean Shower for Plastic Showers & Glass | ✗ Windex                     | ✗ Magic Erasers                                 |
| ✗ Soft Scrub                               | ✗ Acetone                    | ✗ Scouring Pads                                 |
| ✗ Dow Disinfectant Cleaner                 | ✗ Lestoil                    | ✗ Baking Soda                                   |
| ✗ Dow Scrubbing Bubbles                    | ✗ Ammonia                    |   |
| ✗ Scrub Free                               | ✗ Nail Polish Remover        |   |

**\*Use of these chemicals will cause a dull surface and/or an easily recognizable chemical crack. These conditions are not covered by warranty.**

Do not use abrasive cleaning products. Abrasive cleaners, like Magic Erasers dull the gloss of your shower or bath. In extreme cases where the recommended cleaners do not work, use a Chore Boy or 3M Sponge pad. Make sure you use only the ones recommended for Teflon or non-stick surfaces.



*Cracking damage*

## DRAIN CLEANER

**CAUTION:** Liquid drain cleaners are recommended over powders and/or crystal; however, when using liquid drain cleaning agents, bail the standing water out of the bathtub and remove the drain plug. Use a funnel to prevent spills and apply the chemicals directly down the drain. Always make certain that chemicals do not come in contact with your tub or shower surface. Use drain cleaners sparingly so they do not boil up and out of the drain.

**! IMPROPER MAINTENANCE AND CLEANING CAN VOID YOUR WARRANTY.**